

RECTANGULAR MOULDED CASE CURRENT TRANSFORMERS

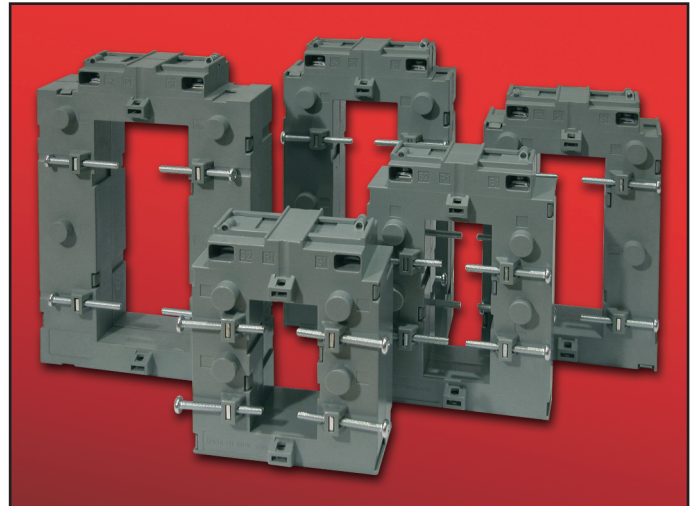
HOBUT

DESCRIPTION

5 rectangular style moulded case current transformers in compact cases with sealable terminal covers to suit a range of busbar sizes.

APPLICATION

For mounting on vertical busbars and transforming various primary current into 5A or 1A standard secondary.



TECHNICAL SPECIFICATION

- Conforms to: IEC185, BS7626, BSEN 60044-1, IEC60044-1 and IEC 61869-2
- Rated System Voltage: 0.72/3kV
- Class 3, 1, 0.5, 0.2 or 0.2S available
- Ambient temperature range -5°C to +50°C
- Continuous current 1.2 x rated current
- Sealable terminal covers
- Protection CT's also available by request

RANGE

Type CTV65

- Busbar window 65 x 32mm
- Primary current 200A - 2000A

Type CTV84

- Busbar window 84 x 34mm
- Primary current 150A - 2500A

Type CTV105

- Busbar window 105 x 38mm
- Primary current 200A - 4000A

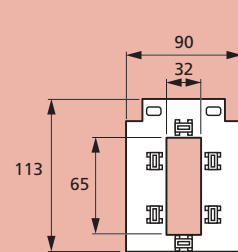
Type CTV127M

- Busbar window 127 x 38mm
- Primary current 400A - 4000A

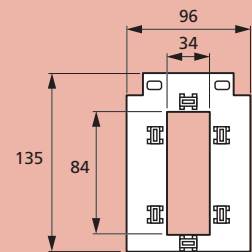
Type CTV127L

- Busbar window 127 x 54mm
- Primary current 400A - 5000A

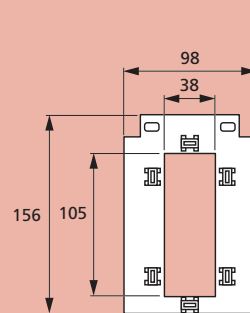
DIMENSIONS (mm)



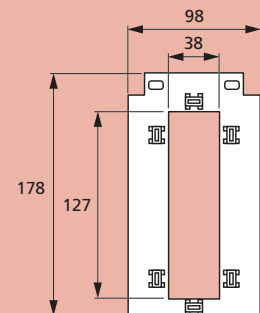
Type CTV65



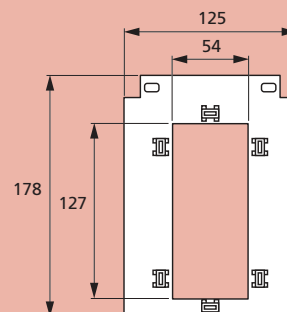
Type CTV84



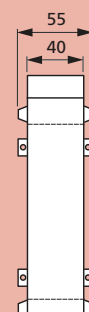
Type CTV105



Type CTV127M



Type CTV127L



NOTE:
All CT's have same dimensional depth, apart from CTV65 which is 45mm depth.

Our policy is one of continuous development and therefore specifications may change without notice.

HOWARD BUTLER LTD

CROWN WORKS, LINCOLN ROAD
WALSALL WS1 2EB ENGLAND

Tel: 01922 640003 Fax: 01922 723626
International Tel: +44 1922 640003 E-mail: sales@hobut.co.uk
<http://www.hobut.co.uk>